



SCOTTISHPOWER  
RENEWABLES

# East Anglia ONE North and East Anglia TWO Offshore Windfarms

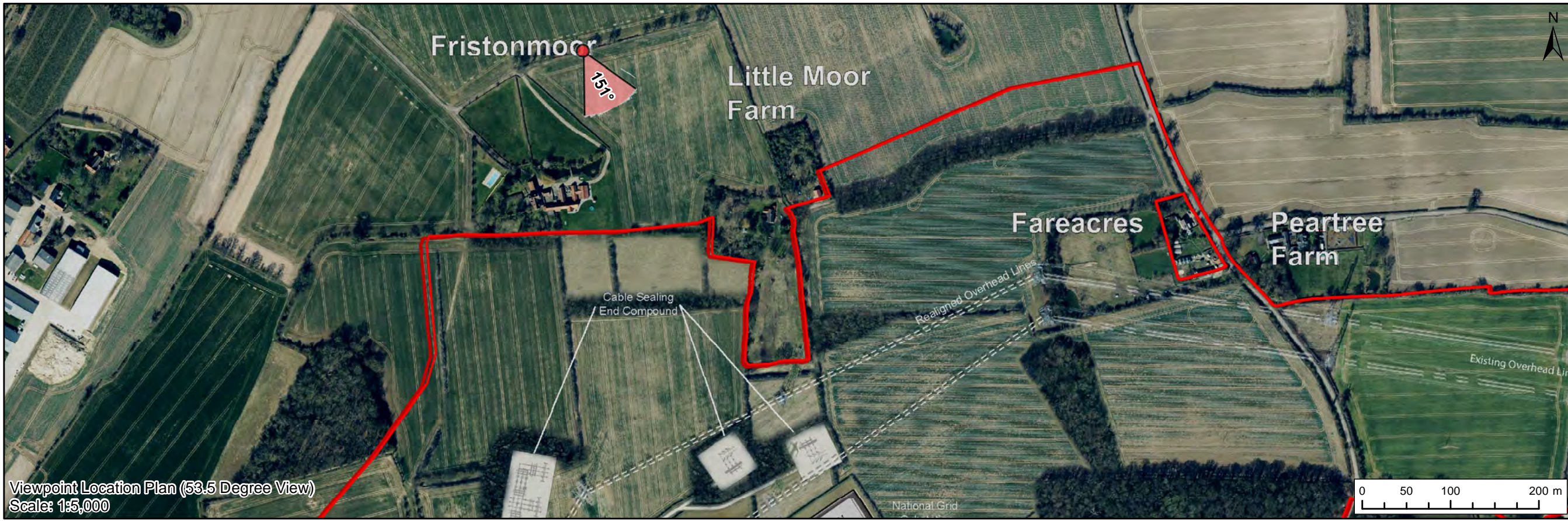
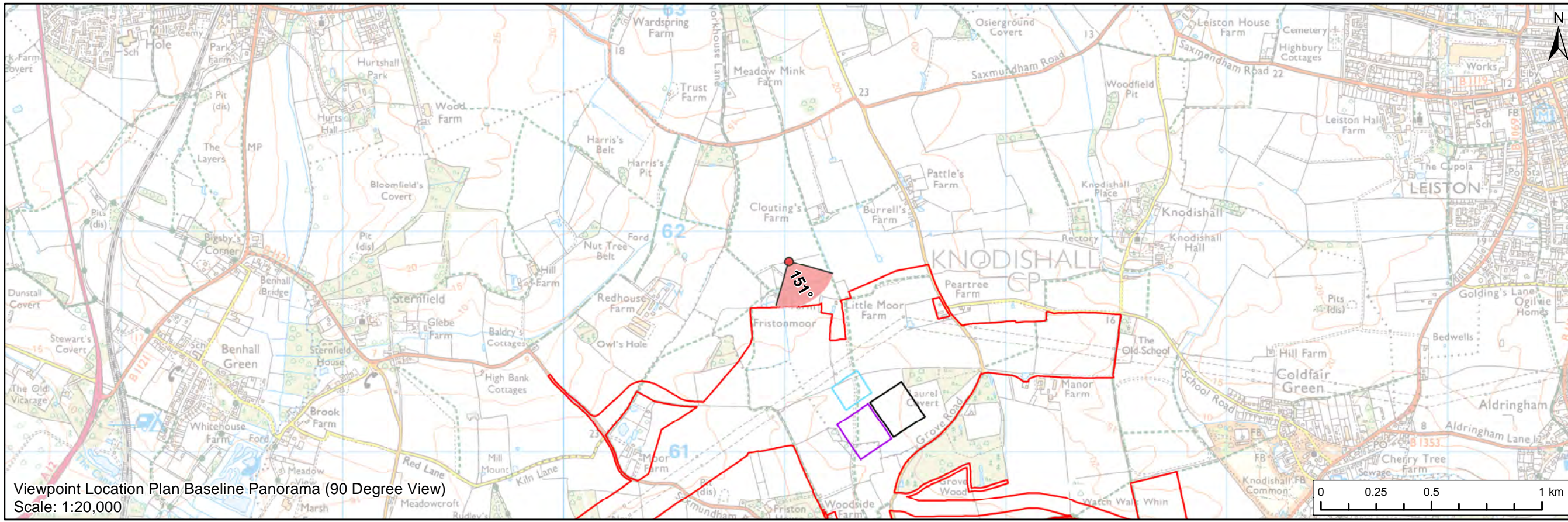
## Heritage Assessment GIS Addendum

Appendix 2 CHVP3 – PRow between  
Moor Farm and Little Moor Farm  
(Appendix 24.7, Figure 8 Update)

Applicants: East Anglia ONE North Limited and East Anglia TWO Limited  
Document Reference: ExA.AS-30.D11.V1\_02  
SPR Reference: EA1N\_EA2-DWF-ENV-REP-IBR-001074\_02

Date: 7<sup>th</sup> June 2021  
Revision: Version 1  
Author: Royal HaskoningDHV

Applicable to **East Anglia ONE North** and **East Anglia TWO**



**Legend**

- East Anglia ONE North and East Anglia TWO Onshore Development Area
- Western Substation (190m x 170m)
- Eastern Substation (190m x 170m)
- Indicative National Grid GIS Substation Location

**Viewpoint:**

- ▲ 90 Degree Field of View Viewpoint
- ▼ 63.5 Degree Field of View Viewpoint



Rev	Date	By	Comment	Approved:
2	07/06/2021	TH	Second Issue (OPEN)	Prepared: TH
1	13/01/2021	LA	First Issue (OPEN)	Checked: SM
				Approved: LT

Scale @ A3
<small>Source: © Crown copyright and database right 2020. Ordnance Survey 100031972. This map has been produced to the latest known information at the time of issue, and has been produced for your information only. Please consult with the SPN Onshore GIS team to ensure the content is still correct before using the information contained on this map. In the event of any error or omission, we accept no responsibility or liability, whether in contract, tort (including negligence) or otherwise in respect of any errors or omissions in the information contained in the map and shall not be liable for any loss, damage or expense caused by such errors or omissions.</small>

<b>East Anglia ONE North and East Anglia TWO</b>		<b>(Figure 8 - GIS Update)</b>	
CHVP3: PROW between Moor Farm and Little Moor Farm	Rev	D11	Coordinate System: BNG Datum: OSGB36
	Date	07/06/21	
	Figure	8a	



Baseline Photograph (53.5 Degree Field of View)

View flat at a comfortable arm's length

<b>OS reference:</b> 641018 E 261864 N	<b>Horizontal field of view:</b> 53.5° (planar projection)	<b>Camera:</b> Canon EOS 5D Mark II	<small>Contains Ordnance Survey digital data © Crown copyright, All rights reserved 2020 Licence number 0100031673</small>
<b>Eye level:</b> 26 m AOD	<b>Principal viewing distance:</b> 812.5 mm	<b>Lens:</b> 50mm (Canon EF 50mm f/1.4)	
<b>Direction of view:</b> 151°	<b>Paper size:</b> 841 x 297 mm (half A1)	<b>Camera height:</b> 1.5 m AGL	<b>Figure: 8b</b>
	<b>Correct printed image size:</b> 820 x 260 mm	<b>Date and time:</b> 22/02/2018, 13:35:32	<b>CHVP3: PROW between Moor Farm and Little Moor Farm</b>



Visual representation of 1st year of operational phase.  
 Photomontage of the proposed western substation and National Grid GIS substation

View flat at a comfortable arm's length

<b>OS reference:</b>	641018 E 261864 N	<b>Horizontal field of view:</b>	53.5° (planar projection)	<b>Camera:</b>	Canon EOS 5D Mark II
<b>Eye level:</b>	26 m AOD	<b>Principal viewing distance:</b>	812.5 mm	<b>Lens:</b>	50mm (Canon EF 50mm f/1.4)
<b>Direction of view:</b>	151°	<b>Paper size:</b>	841 x 297 mm (half A1)	<b>Camera height:</b>	1.5 m AGL
		<b>Correct printed image size:</b>	820 x 260 mm	<b>Date and time:</b>	22/02/2018, 13:35:32

Contains Ordnance Survey digital data © Crown copyright, All rights reserved 2020 Licence number 0100031673

**Figure: 8c**  
**CHVP3: PROW between Moor Farm and Little Moor Farm**



Visual representation of 15th year of operational phase  
 Photomontage of the proposed western substation and National Grid GIS substation

View flat at a comfortable arm's length

<b>OS reference:</b>	641018 E 261864 N	<b>Horizontal field of view:</b>	53.5° (planar projection)	<b>Camera:</b>	Canon EOS 5D Mark II
<b>Eye level:</b>	26 m AOD	<b>Principal viewing distance:</b>	812.5 mm	<b>Lens:</b>	50mm (Canon EF 50mm f/1.4)
<b>Direction of view:</b>	151°	<b>Paper size:</b>	841 x 297 mm (half A1)	<b>Camera height:</b>	1.5 m AGL
		<b>Correct printed image size:</b>	820 x 260 mm	<b>Date and time:</b>	22/02/2018, 13:35:32

Contains Ordnance Survey digital data © Crown copyright, All rights reserved 2020 Licence number 0100031673

**Figure: 8d**  
**CHVP3: PROW between Moor Farm and Little Moor Farm**



Visual representation of 1st year of operational phase  
 Photomontage of the proposed eastern substation and National Grid GIS substation

View flat at a comfortable arm's length

<b>OS reference:</b>	641018 E 261864 N	<b>Horizontal field of view:</b>	53.5° (planar projection)	<b>Camera:</b>	Canon EOS 5D Mark II
<b>Eye level:</b>	26 m AOD	<b>Principal viewing distance:</b>	812.5 mm	<b>Lens:</b>	50mm (Canon EF 50mm f/1.4)
<b>Direction of view:</b>	151°	<b>Paper size:</b>	841 x 297 mm (half A1)	<b>Camera height:</b>	1.5 m AGL
		<b>Correct printed image size:</b>	820 x 260 mm	<b>Date and time:</b>	22/02/2018, 13:35:32

Contains Ordnance Survey digital data © Crown copyright, All rights reserved 2020 Licence number 0100031673

**Figure: 8e**  
**CHVP3: PROW between Moor Farm and Little Moor Farm**



Visual representation of 15th year of operational phase  
 Photomontage of the proposed eastern substation and National Grid GIS substation

View flat at a comfortable arm's length

<b>OS reference:</b>	641018 E 261864 N	<b>Horizontal field of view:</b>	53.5° (planar projection)	<b>Camera:</b>	Canon EOS 5D Mark II
<b>Eye level:</b>	26 m AOD	<b>Principal viewing distance:</b>	812.5 mm	<b>Lens:</b>	50mm (Canon EF 50mm f/1.4)
<b>Direction of view:</b>	151°	<b>Paper size:</b>	841 x 297 mm (half A1)	<b>Camera height:</b>	1.5 m AGL
		<b>Correct printed image size:</b>	820 x 260 mm	<b>Date and time:</b>	22/02/2018, 13:35:32

Contains Ordnance Survey digital data © Crown copyright, All rights reserved 2020 Licence number 0100031673



Visual representation of 1st year of operational phase.  
 Photomontage of the proposed western substation, eastern substation and National Grid GIS substation

View flat at a comfortable arm's length

<b>OS reference:</b>	641018 E 261864 N	<b>Horizontal field of view:</b>	53.5° (planar projection)	<b>Camera:</b>	Canon EOS 5D Mark II
<b>Eye level:</b>	26 m AOD	<b>Principal viewing distance:</b>	812.5 mm	<b>Lens:</b>	50mm (Canon EF 50mm f/1.4)
<b>Direction of view:</b>	151°	<b>Paper size:</b>	841 x 297 mm (half A1)	<b>Camera height:</b>	1.5 m AGL
		<b>Correct printed image size:</b>	820 x 260 mm	<b>Date and time:</b>	22/02/2018, 13:35:32

Contains Ordnance Survey digital data © Crown copyright, All rights reserved 2020 Licence number 0100031673





Visual representation of 15th year of operational phase  
 Photomontage of the proposed western substation, eastern substation and National Grid GIS substation

View flat at a comfortable arm's length

<b>OS reference:</b>	641018 E 261864 N	<b>Horizontal field of view:</b>	53.5° (planar projection)	<b>Camera:</b>	Canon EOS 5D Mark II
<b>Eye level:</b>	26 m AOD	<b>Principal viewing distance:</b>	812.5 mm	<b>Lens:</b>	50mm (Canon EF 50mm f/1.4)
<b>Direction of view:</b>	151°	<b>Paper size:</b>	841 x 297 mm (half A1)	<b>Camera height:</b>	1.5 m AGL
		<b>Correct printed image size:</b>	820 x 260 mm	<b>Date and time:</b>	22/02/2018, 13:35:32

Contains Ordnance Survey digital data © Crown copyright, All rights reserved 2020 Licence number 0100031673

**Figure: 8h**  
**CHVP3: PROW between Moor Farm and Little Moor Farm**